

**Design Package created for:**

Max Kellogg - Elderberry

**Project Date & Rev.**

7/17/2025

Initial Design

**Door Styles used in this design:**

Shaker II Maple Bright White  
*FRAMED*



**Product Features:**

- Made in USA
- Built to order
- Soft close doors and drawers
- Fully refundable sample door program
- Free professional design service
- Wide array of styles and colors

**Your Designer:**

Candice Whitney

[cwhitney@cabinets.com](mailto:cwhitney@cabinets.com)

813-587-2849

Cabinets.com sells only USA made-to-order cabinets. They are built with high-quality lumber and components to offer you the best looking, best performing cabinetry products available.



Note: This drawing is an artistic interpretation of the general appearance of the design. It is not meant to be an exact rendition.



Designed: 7/17/2025  
Printed: 7/17/2025



Note: This drawing is an artistic interpretation of the general appearance of the design. It is not meant to be an exact rendition.



Designed: 7/17/2025  
Printed: 7/17/2025



Note: This drawing is an artistic interpretation of the general appearance of the design. It is not meant to be an exact rendition.



Designed: 7/17/2025  
Printed: 7/17/2025



Note: This drawing is an artistic interpretation of the general appearance of the design. It is not meant to be an exact rendition.



Designed: 7/17/2025  
Printed: 7/17/2025

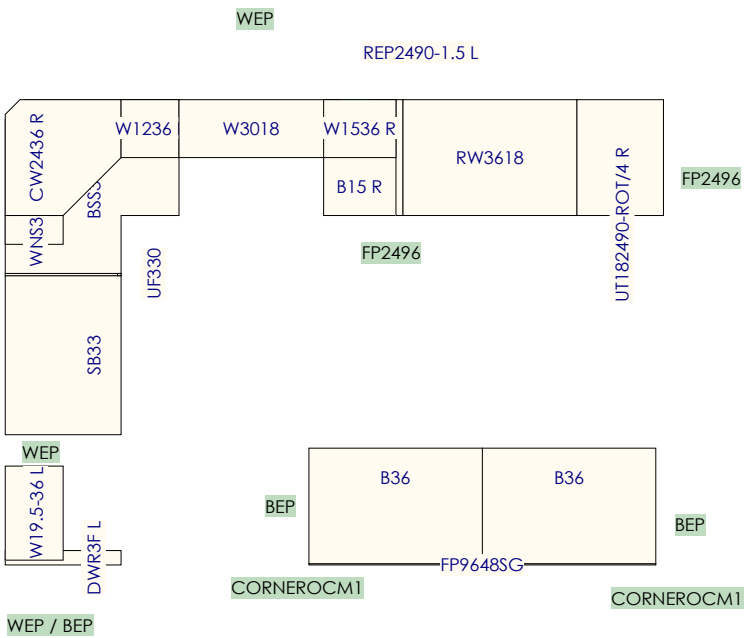


Note: This drawing is an artistic interpretation of the general appearance of the design. It is not meant to be an exact rendition.

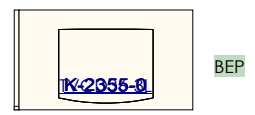


Designed: 7/17/2025  
Printed: 7/17/2025



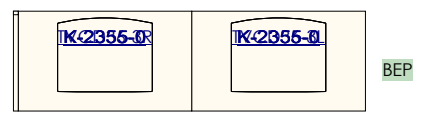


UF330



BEP

UF330



BEP

**\*\*GENERAL INFO\*\***

**FILLERS:**  
TRIM ALL FILLERS TO FIT

**TALL CABINETS:**  
TALL CABINETS MAY NEED TO HAVE TOE KICK REMOVED ON SITE TO TILT UP. PLEASE REFER TO 'THE PANTRY PROBLEM' FOR MORE INFO.

**CORNER CABINETS:**  
EASY REACH CABINET NOT SOFT CLOSE.

**COUNTERTOP INFO:**  
COUNTERTOP SUPPORT BY OTHERS. HARDWARE AND ANY FLOATING SHELVES NOT INCLUDED.

**ROLL OUT TRAYS INCLUDED:**  
\*ROT/4 = 4 ROLLOUT TRAYS

**ISLAND INFO:**  
\*WRAP ISLAND TOE KICK, SIDES & BACK W/ BASE MLDG.

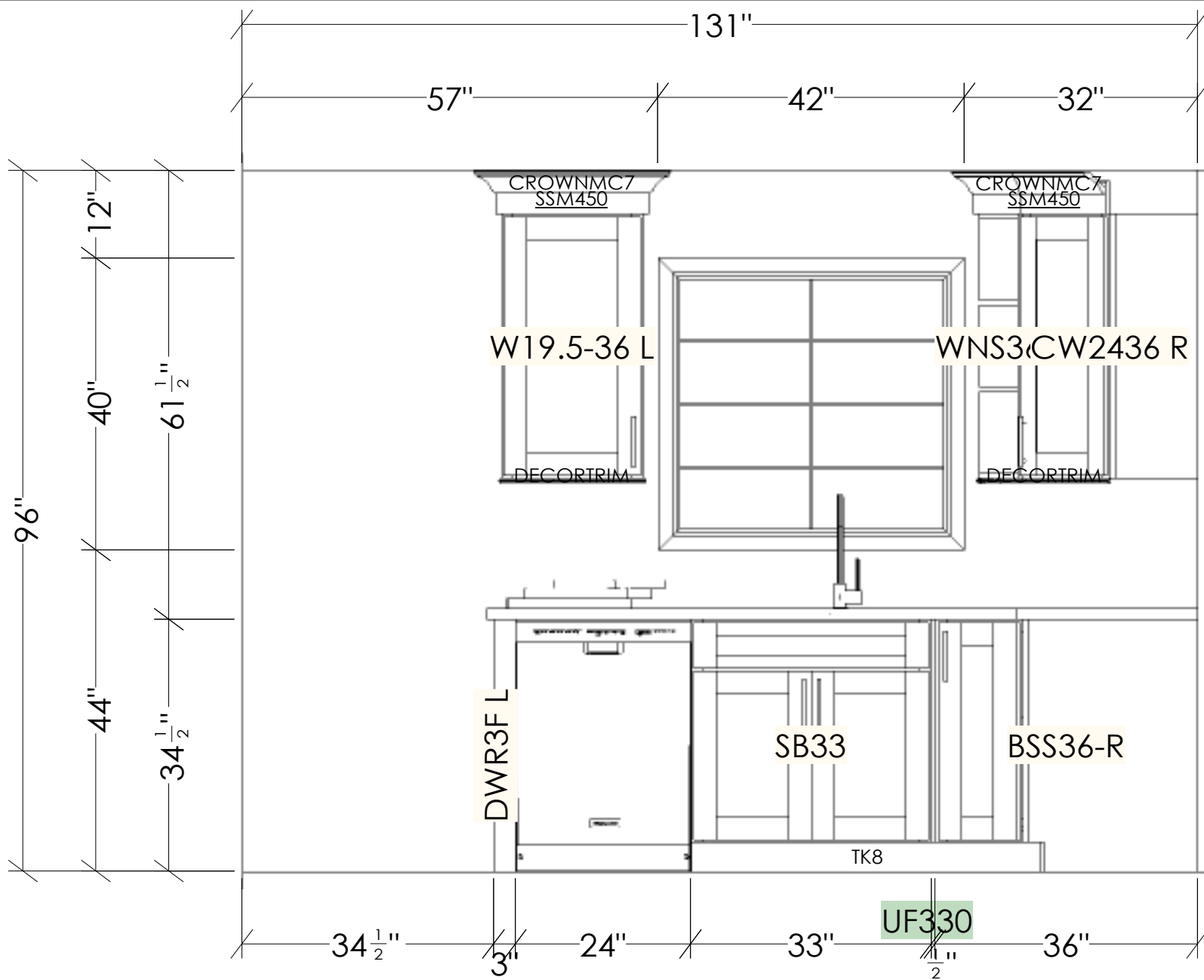
**SHELVING INFO:**  
BASES: 1 HALF-DEPTH SHELF  
WALLS:  
18" - 24"H: 1 SHELF  
30" - 36"H: 2 SHELVES  
39" - 42"H: 3 SHELVES  
\*\*SHELVES ARE ADJUSTABLE\*\*

All dimensions \_size designations given are subject to verification on job site and adjustment to fit job conditions.



This is an original design and must not be released or copied unless applicable fee has been paid or job order placed.

Designed: 7/17/2025  
Printed: 7/17/2025

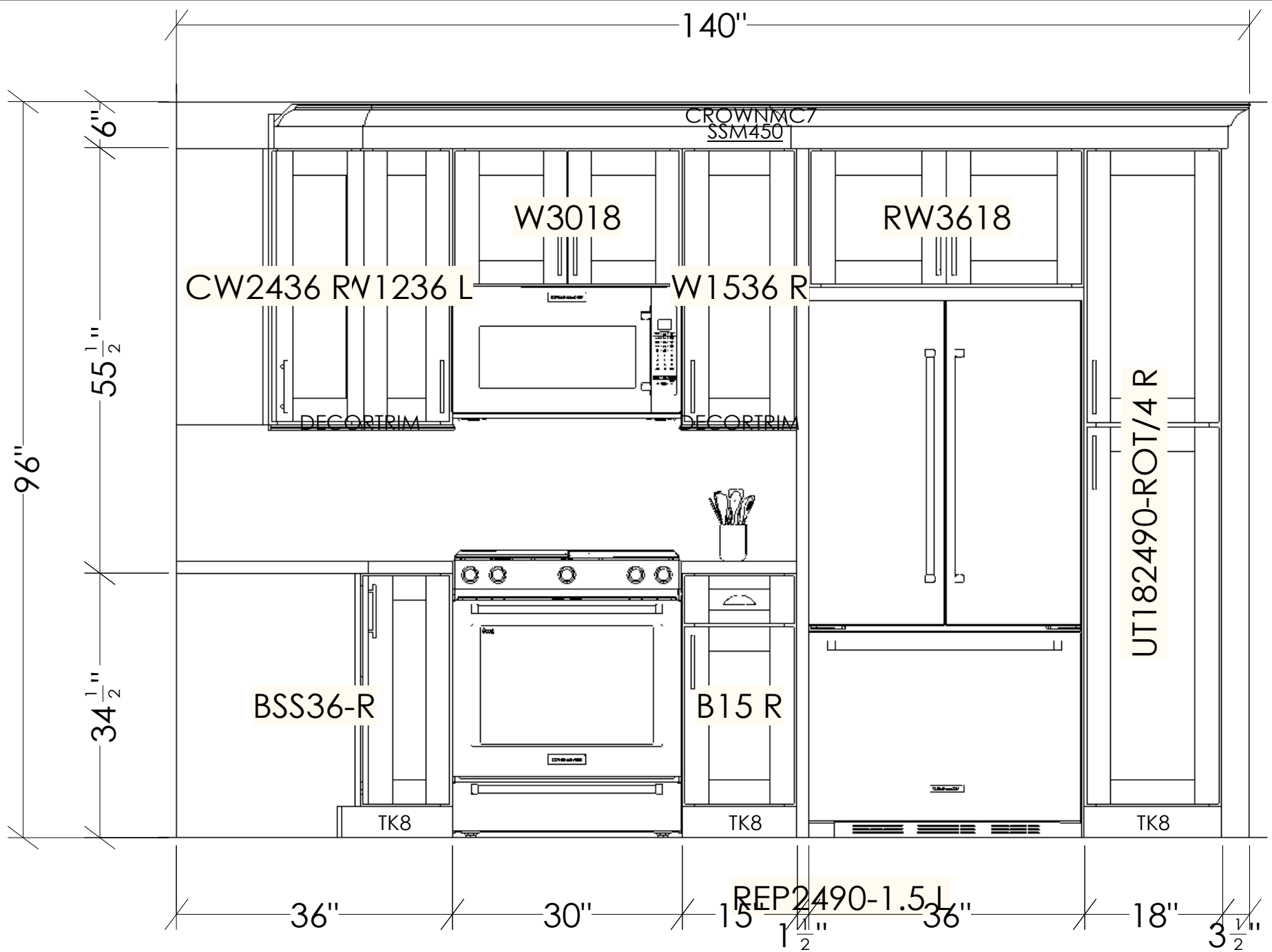


All dimensions and size designations given are subject to verification on job site and adjustment to fit job conditions.

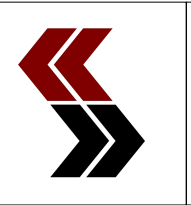


This is an original design and must not be released or copied unless applicable fee has been paid or job order placed.

Designed: 7/17/2025  
 Printed: 7/17/2025



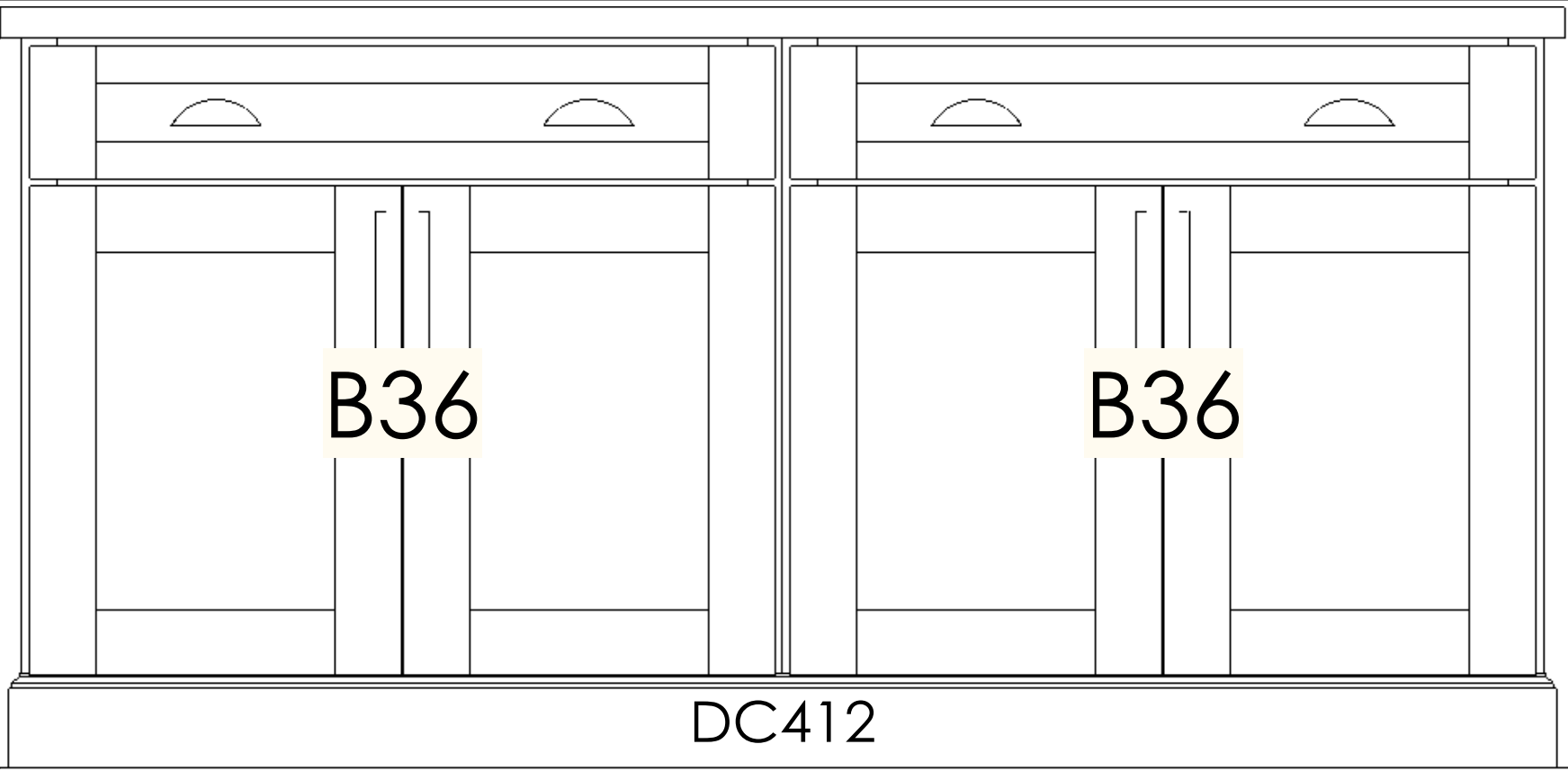
All dimensions and size designations given are subject to verification on job site and adjustment to fit job conditions.



This is an original design and must not be released or copied unless applicable fee has been paid or job order placed.

Designed: 7/17/2025  
 Printed: 7/17/2025

34 1/2"



B36

B36

DC412

36"

36"

72"

All dimensions & size designations given are subject to verification on job site and adjustment to fit job conditions.



This is an original design and must not be released or copied unless applicable fee has been paid or job order placed.

Designed: 7/17/2025  
Printed: 7/17/2025

34 <sup>1</sup>/<sub>2</sub>"

FP9648SG

DC412

72"

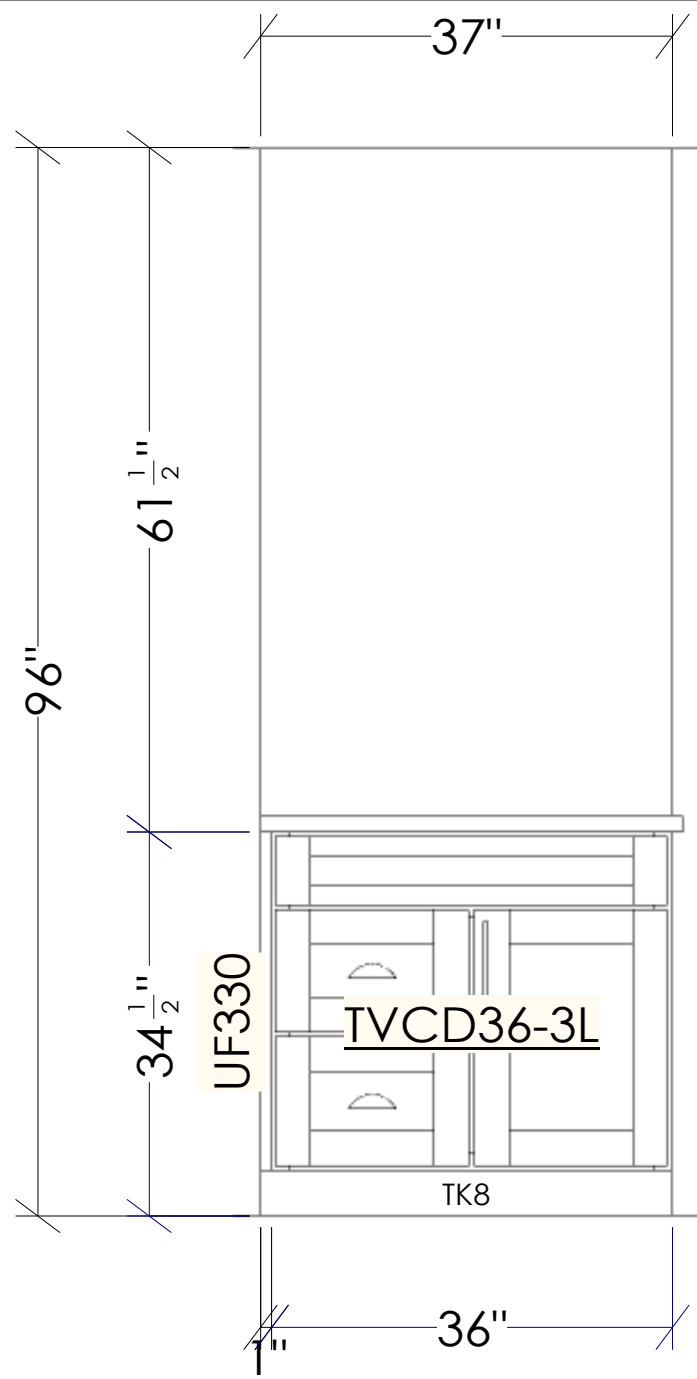
72"

All dimensions & size designations given are subject to verification on job site and adjustment to fit job conditions.



This is an original design and must not be released or copied unless applicable fee has been paid or job order placed.

Designed: 7/17/2025  
Printed: 7/17/2025



All dimensions & size designations given are subject to verification on job site and adjustment to fit job conditions.



This is an original design and must not be released or copied unless applicable fee has been paid or job order placed.

Designed: 7/17/2025  
 Printed: 7/17/2025



All dimensions and size designations given are subject to verification on job site and adjustment to fit job conditions.



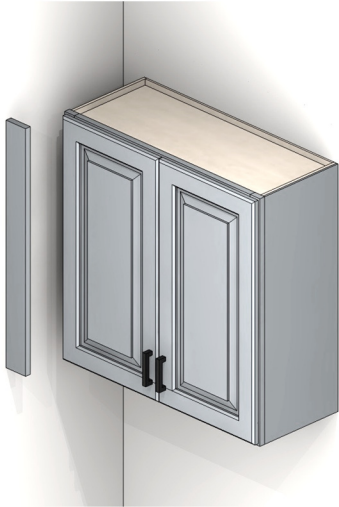
This is an original design and must not be released or copied unless applicable fee has been paid or job order placed.

Designed: 7/17/2025  
 Printed: 7/17/2025

# TRIM NOTES

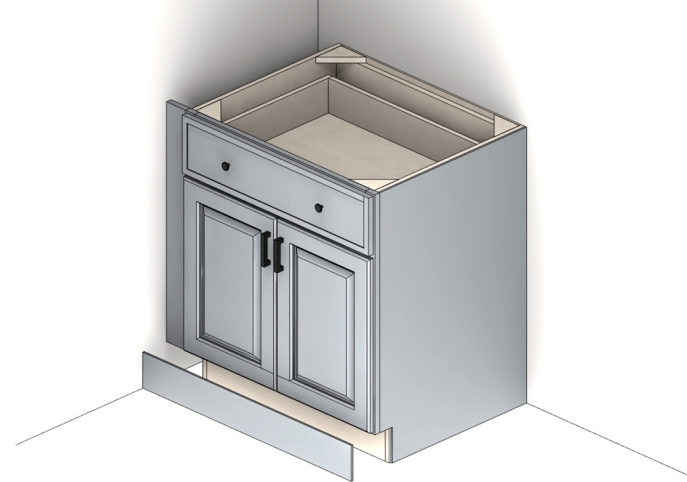
**Framed**  
Cabinet Box Construction

 **Cabinets.com**<sup>®</sup>



## Fillers

Fillers are most commonly used to “fill” any gap or leftover space in a run of cabinetry by field-cutting them to the desired size. They can be used vertically to provide additional space between a cabinet and a wall in order to keep the edge of doors from binding into the wall, or to keep fully extended drawers from impacting close obstacles. They can be used horizontally as crown, light rail, or valance. They can also be used to add additional height and dimension as a riser molding. Fillers are available in a variety of lengths to best accommodate their specific use with minimum waste.



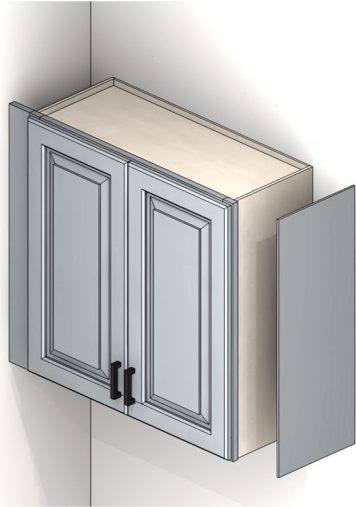
## Toe Kick Molding

The purpose of a toe kick space is to create a recess for your feet, which allows you to stand closer to the countertop or workspace more comfortably. The toe kick stretcher attached to the cabinet is usually made of unfinished material. After installation, a finished Toe Kick Molding is applied to cover an entire run of unfinished toe space. Toe Kick Molding is a 96” long strip of finished covering that is field-cut and positioned in the recess to provide a continuous completed look to the cabinetry.

# TRIM NOTES

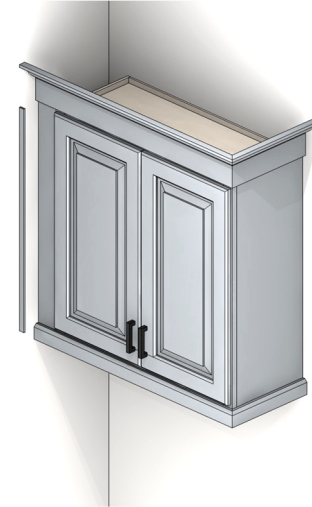
**Framed**  
Cabinet Box Construction

 **Cabinets.com**<sup>®</sup>



## Skin Panels

Skin Panels are 1/4" plywood with a matching finish on one side. They are available in a variety of sizes in order to provide finish options for different needs. Cabinets have unfinished sides and will require a Skin Panel applied to all cabinet sides that will be visible after installation. These Skin Panels are available in specific sizes and are designed to fit on the side of a cabinet behind the face frame edge with minimal field-cuts required. Oversized Skin Panels, such as those used to finish the back of an island or to cover a stack of cabinetry, are larger and must be field-cut to the desired dimensions.



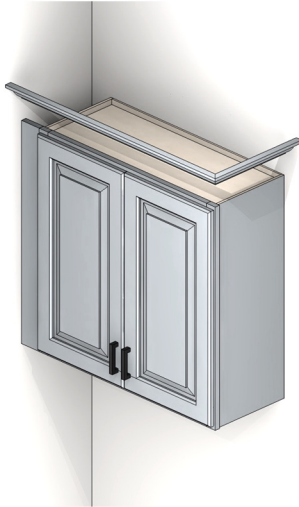
## Scribe Molding

Scribe Molding is a thin piece of finished trim used to cover any areas that may have uneven gaps or raw edges visible once installation is complete. It is slightly flexible, allowing it to follow slight curvatures against walls, floors, or ceilings. It is typically used any place the straight edges of cabinetry visibly come into contact with a surface that is bowed or uneven. It is available in 96" lengths and must be field-cut to cover any visible gaps or seams against walls, floors, and ceilings up to 1/2" wide. It is also used to cap the cut, unfinished edge of a Toe Kick Molding or any other raw edge of material up to 3/4" wide.

# TRIM NOTES

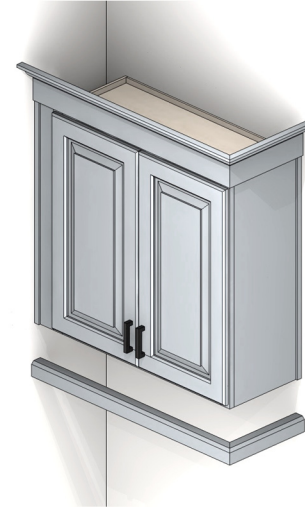
**Framed**  
Cabinet Box Construction

 **Cabinets.com**<sup>®</sup>



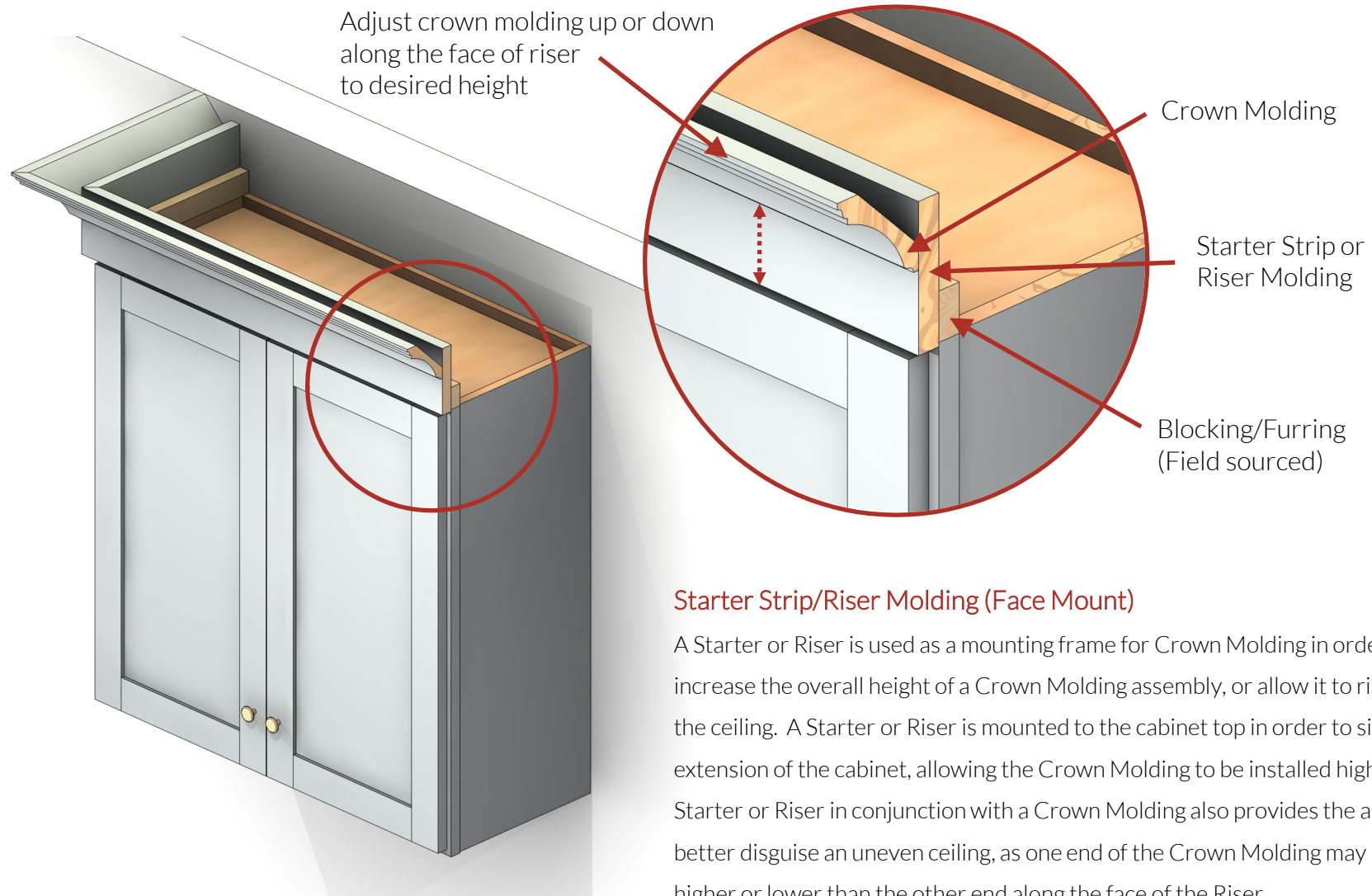
## Crown Molding

Crown Molding is used to finish the tops of tall and wall cabinets. All Cabinets.com cabinet door styles are Full Overlay - this means the doors overlap the front face frame of the cabinet box, leaving only a small amount visible. Since this visible reveal will vary depending on the specific cabinet line you choose, cabinets that have smaller reveals may require the Crown Molding to be installed on top of the cabinet frame instead of to the face, secured with blocking from behind. Crown is available in various styles and sizes to accommodate different design styles and ceiling heights.



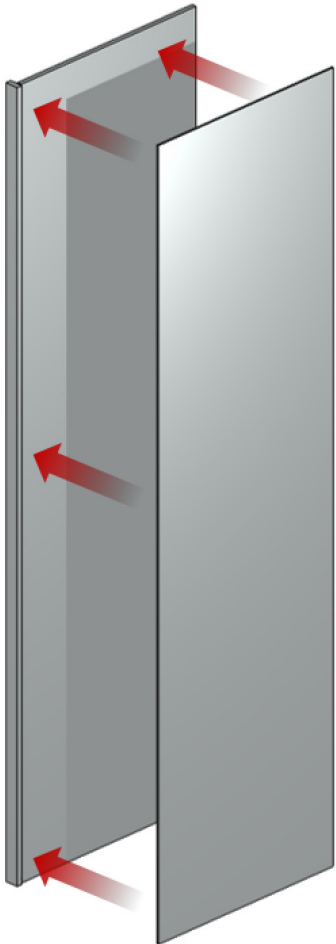
## Light Rail Molding

Light Rail Molding is used to finish the bottom of wall cabinets. It can function as a trim to conceal under-cabinet lighting fixtures and provide a barrier from the light glare, or simply serve as a decorative enhancement. Light Rail Moldings are available in a variety of styles and sizes to accommodate different design styles. When selecting a Light Rail Molding, be mindful of the molding height to ensure the open space left after installation will accommodate any countertop appliances.



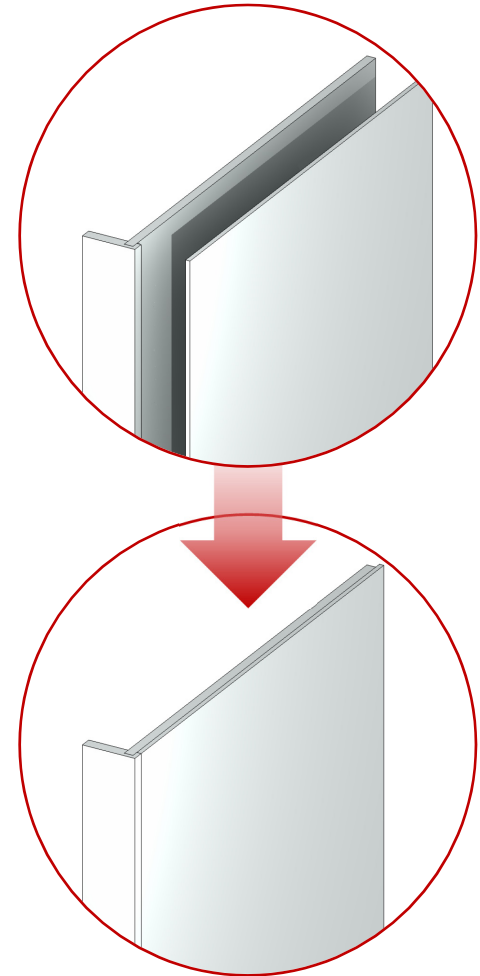
### Starter Strip/Riser Molding (Face Mount)

A Starter or Riser is used as a mounting frame for Crown Molding in order to increase the overall height of a Crown Molding assembly, or allow it to rise flush to the ceiling. A Starter or Riser is mounted to the cabinet top in order to simulate an extension of the cabinet, allowing the Crown Molding to be installed higher. Using a Starter or Riser in conjunction with a Crown Molding also provides the ability to better disguise an uneven ceiling, as one end of the Crown Molding may be mounted higher or lower than the other end along the face of the Riser.



## Refrigerator End Panels:

When installing a Refrigerator End Panel return against the flat edge of a countertop, a tall finish panel skin should be applied to the exposed side in order to provide a continuous flush surface against the straight edge of the counter.



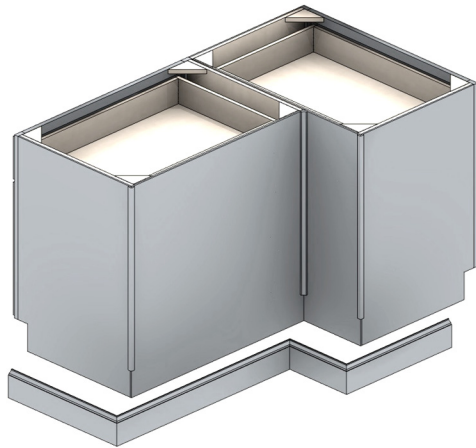
## Tall Finish Panel Skins:

The exposed side of a Refrigerator End Panel has a 1/4" recess behind the edge of the face filler. The Finish Panel skin is applied directly to the plywood panel behind the face filler to make the entire surface flush.

# TRIM NOTES

**Framed**  
Cabinet Box Construction

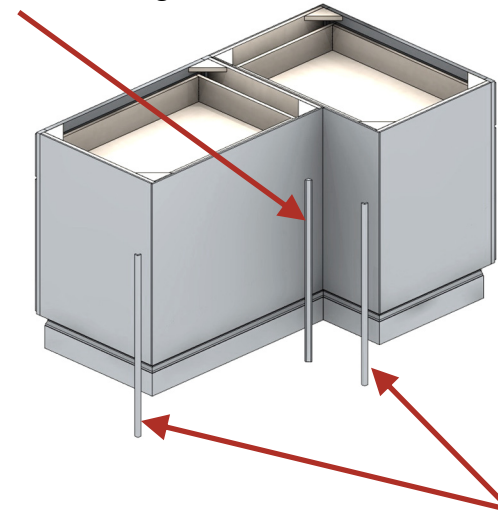
 **Cabinets.com**<sup>®</sup>



## Base Molding

Base Molding is generally used to provide a decorative trim at the floor level of base cabinets by installing it with the profiled edge facing up. It completes the lower sections of panel skins used on islands and peninsulas to give them a more furniture-like feel. Installing the molding along the lower section of cabinet back panels and sides, and ending at the toe recess will create one continuous look.

Inside Corner Molding



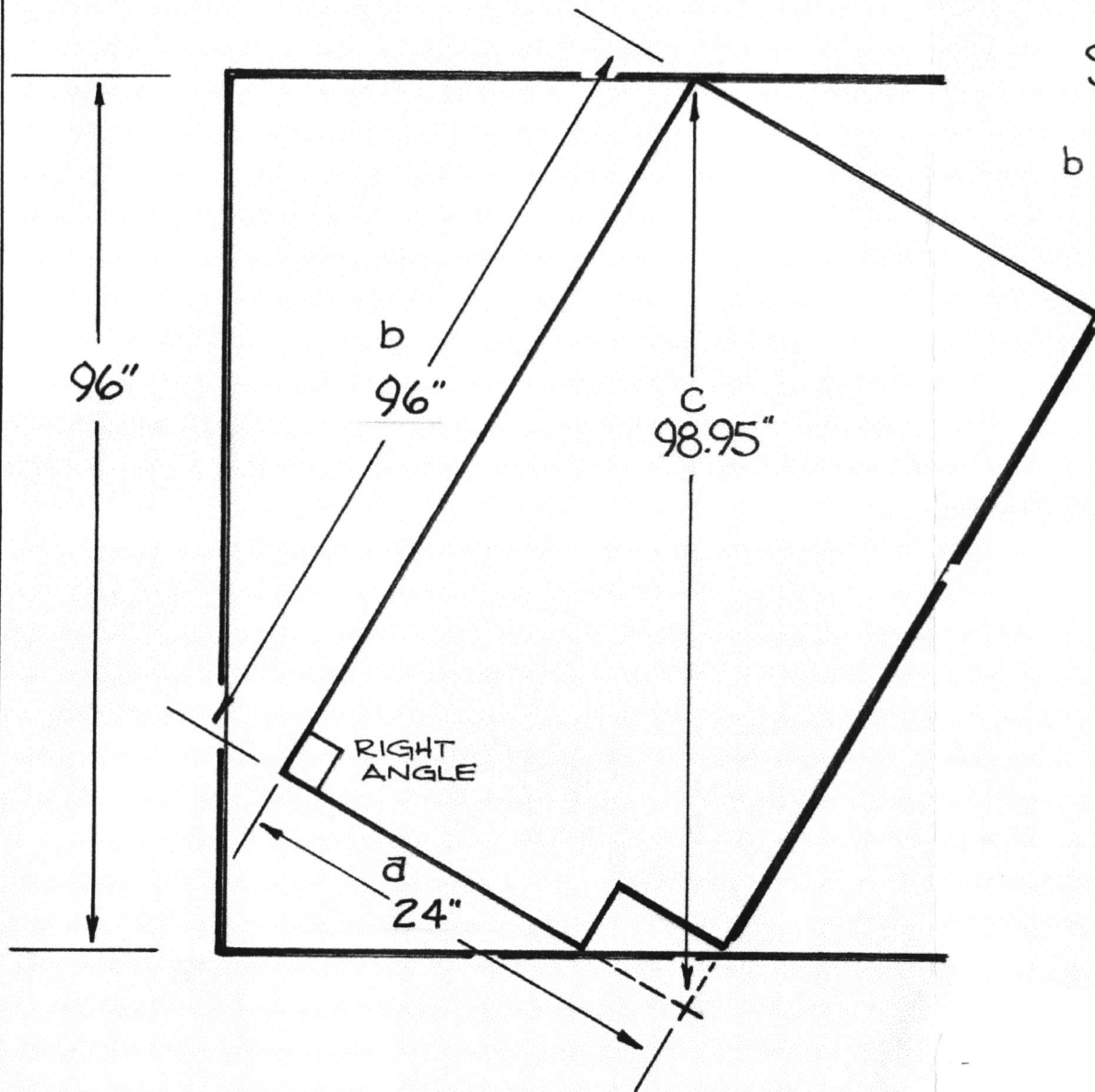
Outside Corner Molding

## Corner Molding

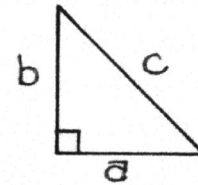
Corner molding is used to cover an unfinished edge or a gap where two panels or pieces of material meet at a 90 degree angle. Outside Corner Molding is used to cap the raw edge of material visible on an exterior corner. Inside Corner Molding is used to cover any gaps where two pieces of material meet on an interior corner. They should be used in conjunction with any design that will require finished paneling on the back of a cabinet such as an island or peninsula.

# THE PANTRY PROBLEM

HOW MUCH TOEKICK MUST BE REMOVED TO STAND THIS PANTRY UP?



SOLVE USING PYTHAGOREAN THEOREM



• IF - RIGHT TRIANGLE

• THEN -  $a^2 + b^2 = c^2$

SOLUTION:

FIND TALLEST PANTRY HEIGHT USING  
 $24^2 + 96^2 = 9792$  ( $c^2$ )  $\sqrt{9792} = 98.95''$   
TALLEST HEIGHT

PANTRY MUST BE LESS THAN  
96" TO CLEAR SO:

$$98.95' - 95.95' = 3.0''$$

WILL REQUIRE REMOVAL OF  
3.0" OF TOEKICK TO CLEAR.

### Are the cabinets assembled?

Yes, the cabinets are fully assembled. They are ready to be installed upon receipt.

### Are the cabinets all-wood construction?

Framed and Frameless cabinets boxes are made using furniture-grade plywood, Euro Frameless are furniture-grade particleboard with a plywood upgrade available for many components. A variety of North American hardwoods are used for all Framed and Frameless drawer boxes, Euro Frameless drawer boxes are white melamine.

### Do the cabinets have soft close doors and drawers?

Absolutely. All hinges and drawer glides are genuine *Blum*® soft close. Some specialty cabinets may utilize standard hinges and drawer runners.

### What is the interior cabinet finish?

The cabinet interior is a natural maple with a UV clearcoat finish. Cabinets ordered with a *Prepared For Glass/Mullions* option have an interior finish that matches the door color. Euro Frameless cabinet interiors are white melamine.

### How can I purchase additional paint or stain?

Although genuine *Sherwin-Williams*® paint and stain is used, the colors are mixed in large quantities at the factory and may not be an exact match to a given color code. For best results on a color match, we recommend taking a door from your order to a local paint shop and have them provide a match directly from the door.

### Is there a price difference between framed and frameless?

Cabinet to cabinet the prices can vary between product lines. Frameless and Euro Frameless cabinets ordered with *Matching Finished Sides* will be slightly more expensive than a framed cabinet with a field-applied skin panel. Frameless installations may require additional fillers or trim, so a design created with frameless cabinets may be slightly more expensive than the same layout designed with framed.

### Where can I purchase glass for my cabinet doors?

Most local glass shops can cut and install the glass panes for cabinets ordered with *Prepared For Glass/Mullions* doors. We recommend you remove the door and take it to the glass shop for precise measurement and installation of the glass.

### Are the cabinet doors/drawers pre-drilled for knobs or pulls?

No. Holes for knobs or pulls must be drilled on site after the cabinets have been leveled and installed.

### Can I get my order sooner?

All cabinets are made to order and put through a multi-step process. Due to this level of production, we are unable to rush large orders.

### Do you have an installer you can recommend?

We do not currently recommend specific installers.

## DELIVERY IN:

**6 - 8 WEEKS**

At Cabinets.com, we are committed to delivering high-quality kitchen cabinets at industry-leading delivery time frames.

All qualifying orders will receive a final mile delivery service at no additional charge. Some restrictions may apply in select areas.

All Final-Mile deliveries will be scheduled for soonest available dates

For more shipping questions, please contact the [customer service](#) team.

## GENERAL INFORMATION

We recommend that cabinets be stored only in a clean, dry, climate-controlled environment. Most delivery facilities are not properly equipped for extended or long-term storage of real wood cabinetry. Storage options are not available for all Final-Mile deliveries.

Please prepare the space in which you would like the cabinets to be placed and be sure the area is dry and large enough to hold all items. Cabinets.com will ship all orders in the timeliest manner possible and is not responsible nor liable for any issues resulting from shipment delay of any kind.

Delivery personnel will not unpack the cabinets, however, if a cabinet appears to be damaged (box damage) you may ask to have that item removed from the packaging for further inspection.

Delivery constitutes ONE attempt at the scheduled time. If for any reason the customer is unable to accept the order at the designated time, the cost of subsequent delivery attempts would be the responsibility of the customer.

## WE'LL KEEP IN TOUCH

We will keep you informed about the delivery status of your order, communicating with you at the following points:

- An email from us when your order ships from the factory with a projected arrival date at the local delivery terminal.
- A call from the delivery company to schedule your in-home delivery appointment.
- An automated call one day prior to actual delivery to provide a four-hour delivery window.
- A call from delivery personnel thirty minutes to one hour prior to arrival.

## WHAT TO EXPECT UPON DELIVERY

- Box truck transportation
- Delivery into the first dry space at your delivery location.
- Signature required by someone over 18 years of age.